

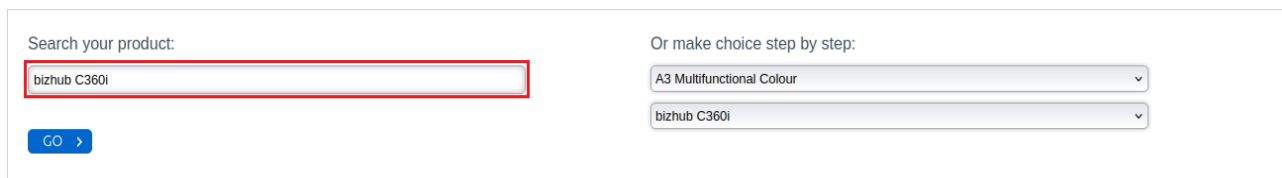
Konica Minolta – Bizhub C360i Colour Printer Installation Guide [Linux]

ATTENTION:

Colour documents will be available for printing only in the Main Hall.

Driver installation

1. Go to the [Konica Minolta](#) website, choose appropriate operating system and English language.



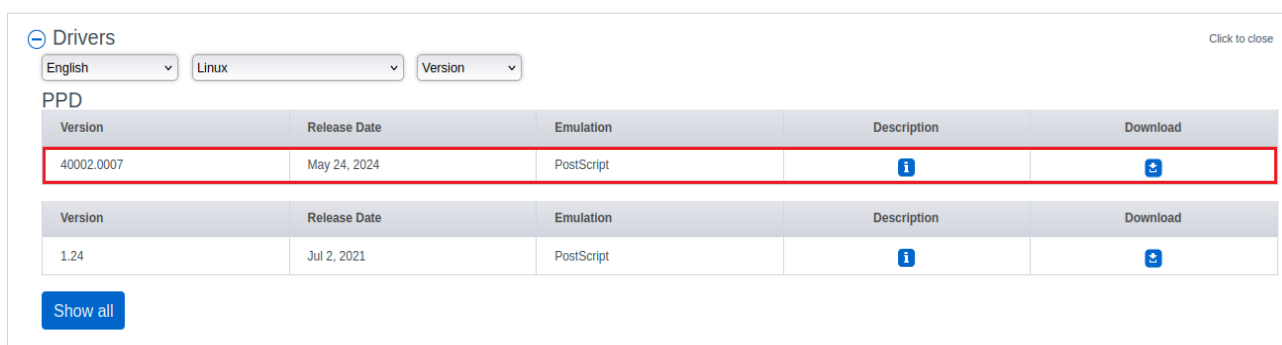
Search your product:

Or make choice step by step:

A3 Multifunctional Colour

bizhub C360i

GO >



Drivers Click to close

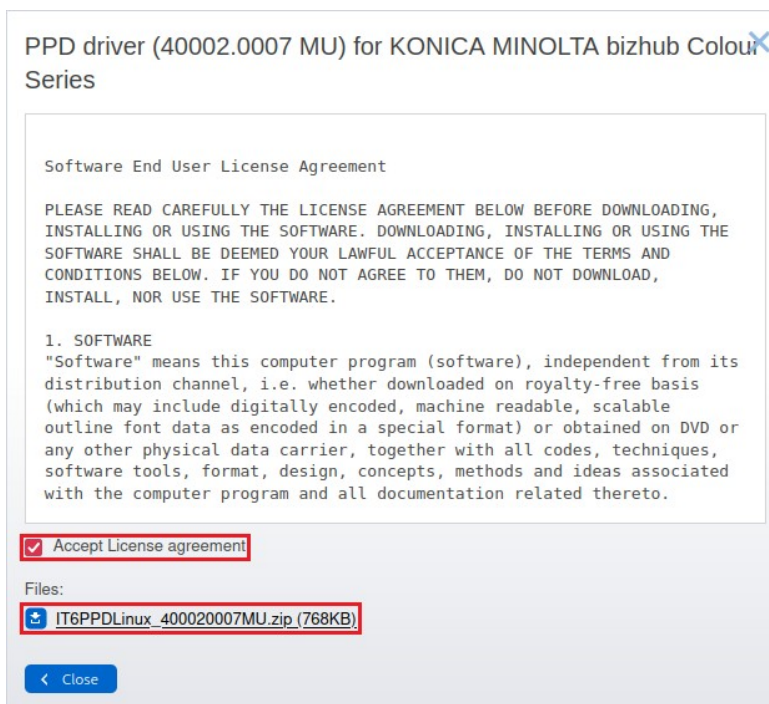
English Linux Version

PPD

Version	Release Date	Emulation	Description	Download
40002.0007	May 24, 2024	PostScript	i	+
1.24	Jul 2, 2021	PostScript	i	+

Show all

2. Accept the license and download the file



PPD driver (40002.0007 MU) for KONICA MINOLTA bizhub Colour Series

Software End User License Agreement

PLEASE READ CAREFULLY THE LICENSE AGREEMENT BELOW BEFORE DOWNLOADING, INSTALLING OR USING THE SOFTWARE. DOWNLOADING, INSTALLING OR USING THE SOFTWARE SHALL BE DEEMED YOUR LAWFUL ACCEPTANCE OF THE TERMS AND CONDITIONS BELOW. IF YOU DO NOT AGREE TO THEM, DO NOT DOWNLOAD, INSTALL, NOR USE THE SOFTWARE.

1. SOFTWARE

"Software" means this computer program (software), independent from its distribution channel, i.e. whether downloaded on royalty-free basis (which may include digitally encoded, machine readable, scalable outline font data as encoded in a special format) or obtained on DVD or any other physical data carrier, together with all codes, techniques, software tools, format, design, concepts, methods and ideas associated with the computer program and all documentation related thereto.

Accept License agreement

Files:

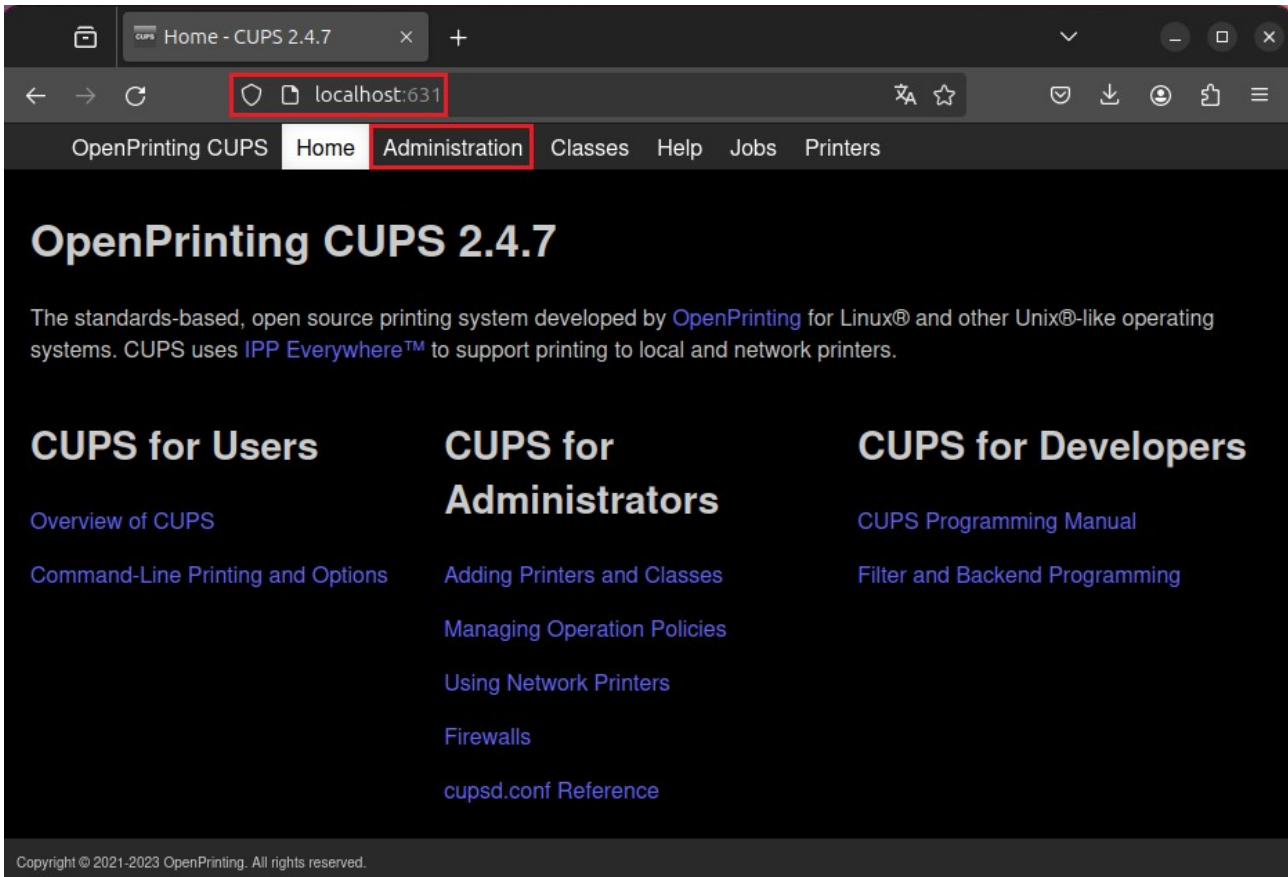
[IT6PPDLinux_400020007MU.zip \(768KB\)](#)

Close

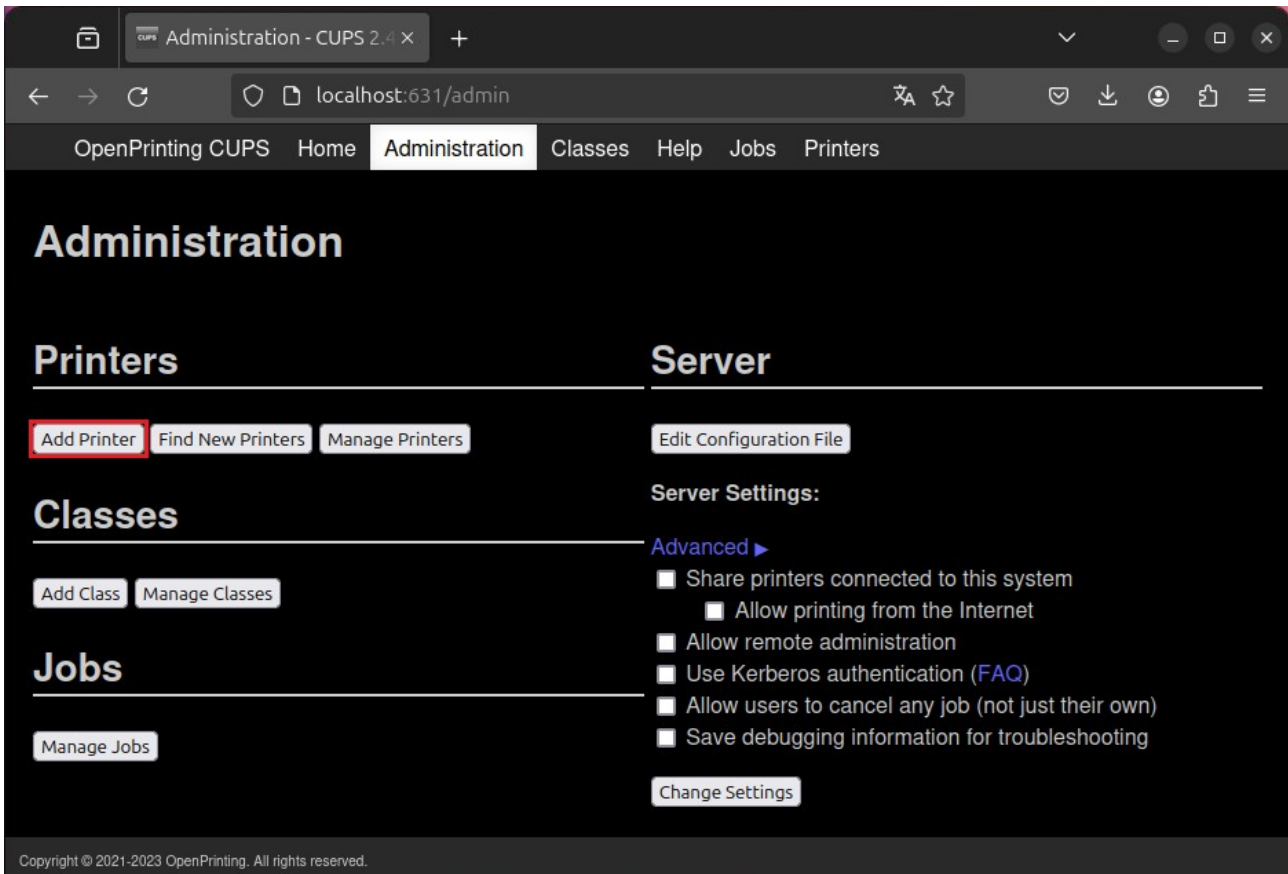
3. Unpack the driver archive anywhere, e.g. Desktop.

Konica Minolta – Bizhub C360i Colour Printer Installation Guide [Linux]

4. Open internet browser, input **localhost:631** address and click the **Administration** tab.

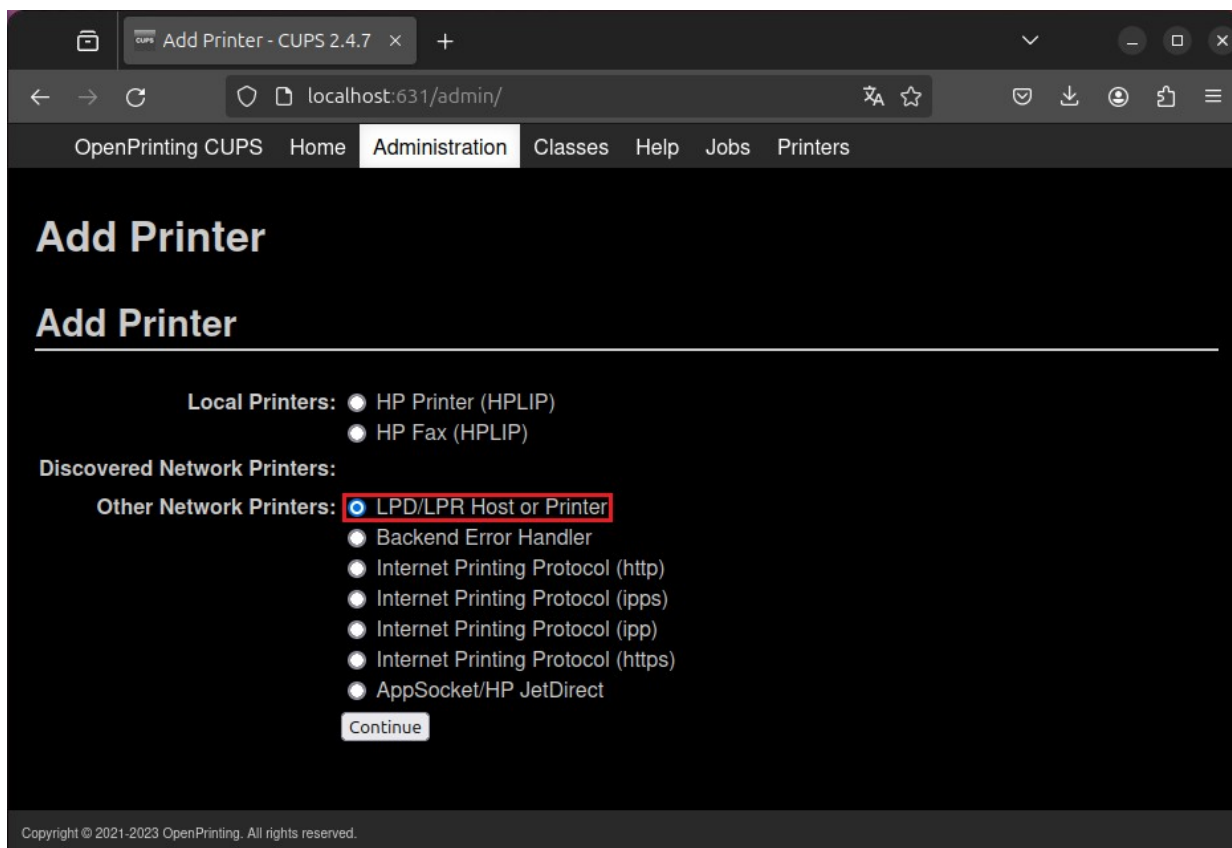


5. Input username and password. Next click **Add Printer** button.



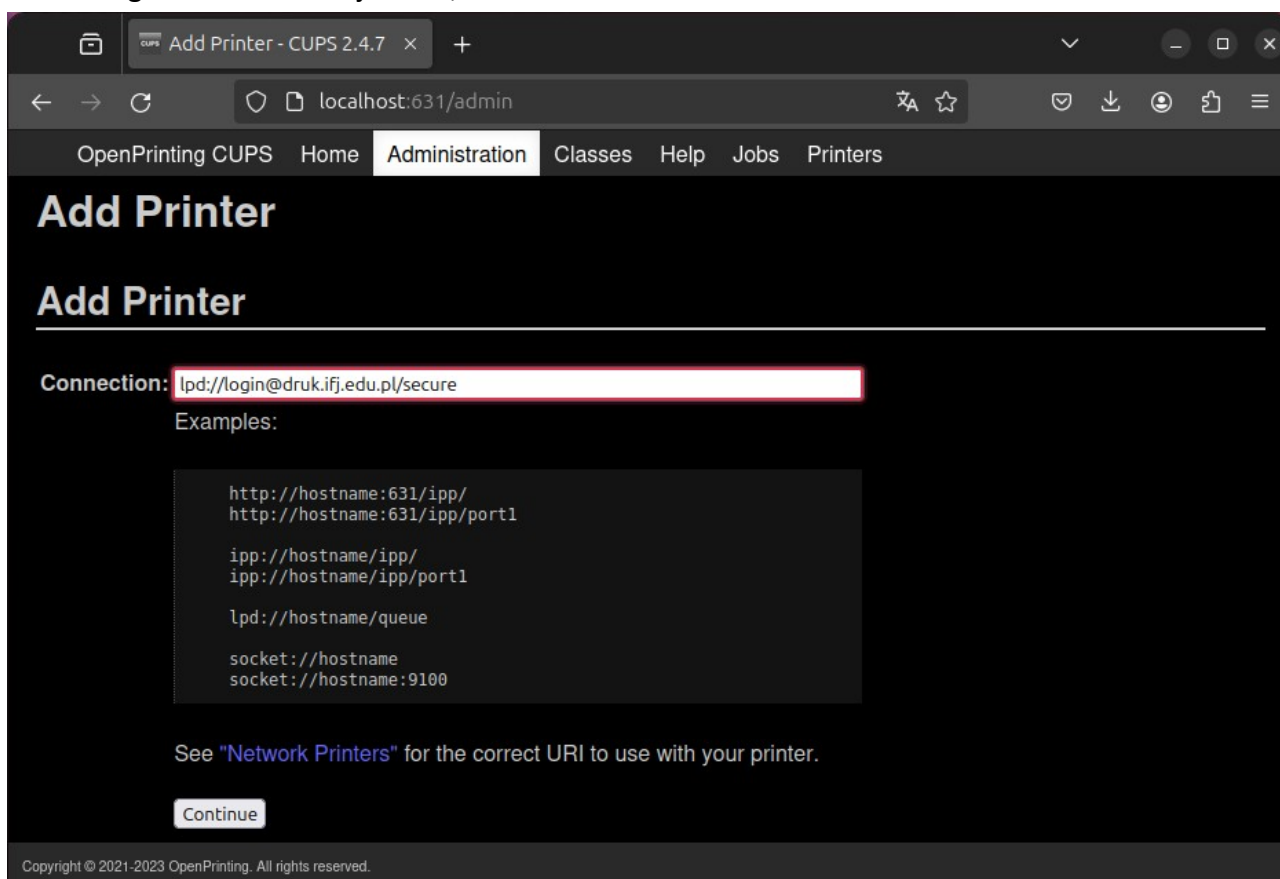
Konica Minolta – Bizhub C360i Colour Printer Installation Guide [Linux]

6. Select **LPD/LPR Host or Printer** and click *Continue*.



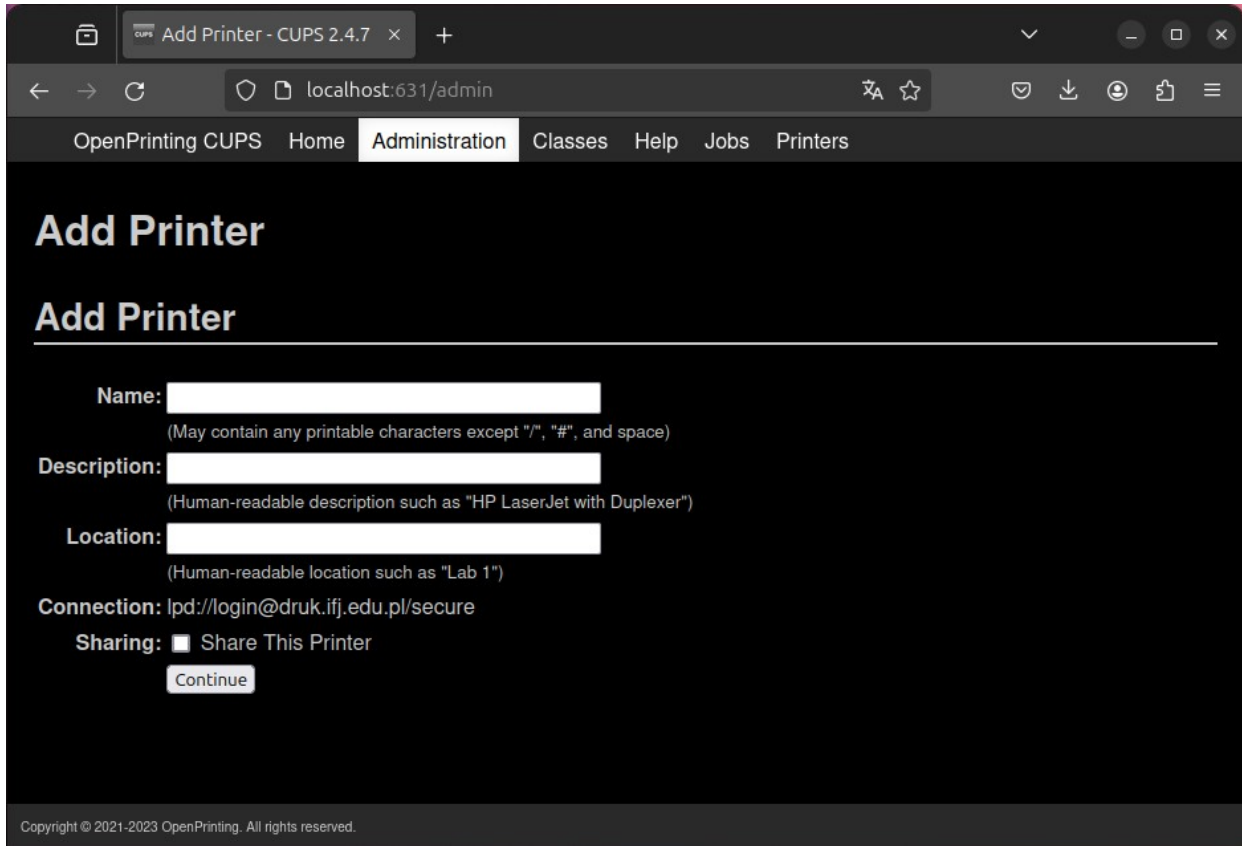
7. In **Connection** field input the following: `lpd://login@druk.ifj.edu.pl/secure`

where **login** follows format: first letter of the name and whole surname
e.g.: Jan Nowak → jnowak, Anna Nowak-Kowalska → anowak



Konica Minolta – Bizhub C360i Colour Printer Installation Guide [Linux]

- Input name, description and location of the printer. You are free to type anything here. Click *Continue* button.

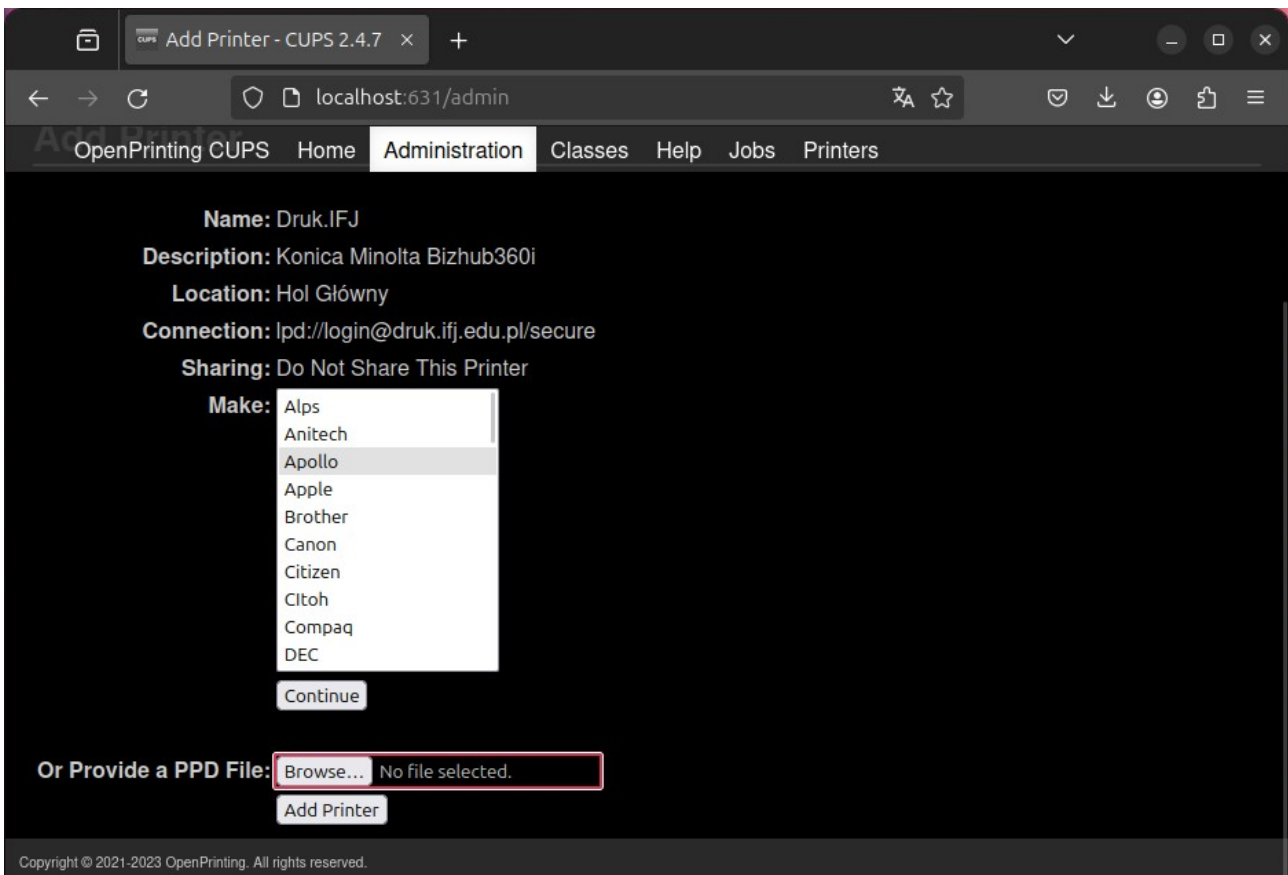


The screenshot shows a web browser window with the URL localhost:631/admin. The page title is 'Add Printer' and the navigation menu includes 'Administration', 'Classes', 'Help', 'Jobs', and 'Printers'. The form contains the following fields and options:

- Name:** [Empty text input field]
- Description:** [Empty text input field]
- Location:** [Empty text input field]
- Connection:** lpd://login@druk.ifj.edu.pl/secure
- Sharing:** Share This Printer
- Continue** button

Copyright © 2021-2023 OpenPrinting. All rights reserved.

- Click **Browse...** button and select the unpacked driver: /English/CUPS1.2/*****iUX.ppd. Click *Add Printer* button.



The screenshot shows the same web browser window as the previous one, but with the 'Make' dropdown menu open. The form fields are now populated with the following information:

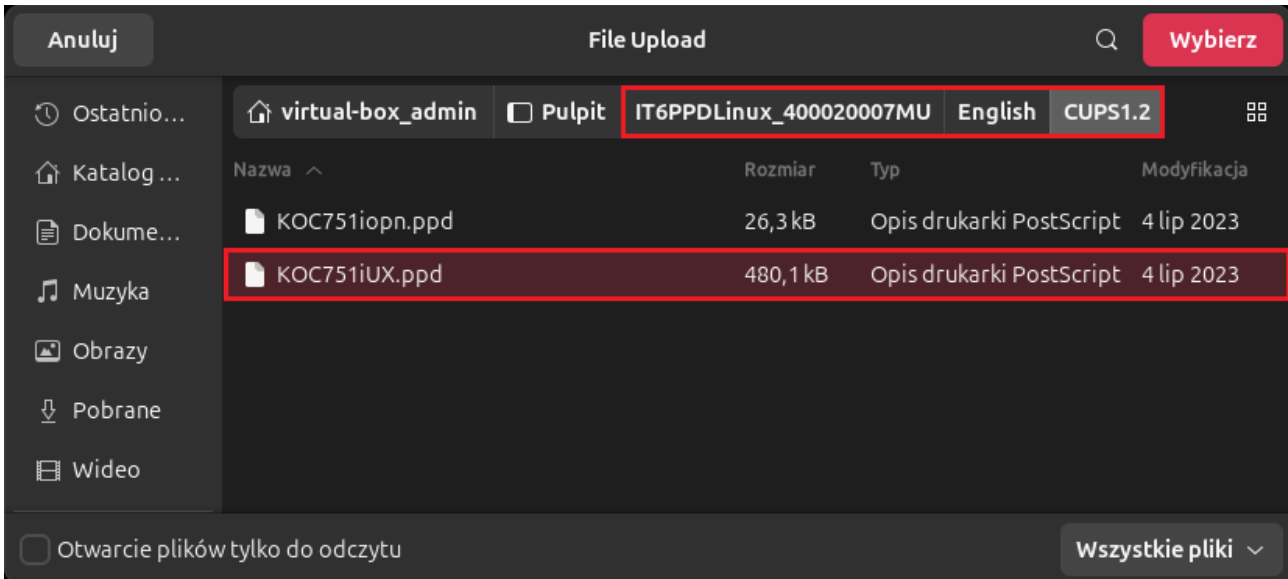
- Name:** Druk.IFJ
- Description:** Konica Minolta Bizhub360i
- Location:** Hol Główny
- Connection:** lpd://login@druk.ifj.edu.pl/secure
- Sharing:** Do Not Share This Printer
- Make:** [Dropdown menu open with 'Apollo' selected]
- Continue** button

At the bottom of the form, there is a section for providing a PPD file:

- Or Provide a PPD File:** No file selected.
- Add Printer** button

Copyright © 2021-2023 OpenPrinting. All rights reserved.

Konica Minolta – Bizhub C360i Colour Printer Installation Guide [Linux]



10. Printer has been added successfully

