

Konica Minolta – Bizhub 360i Printer Installation Guide

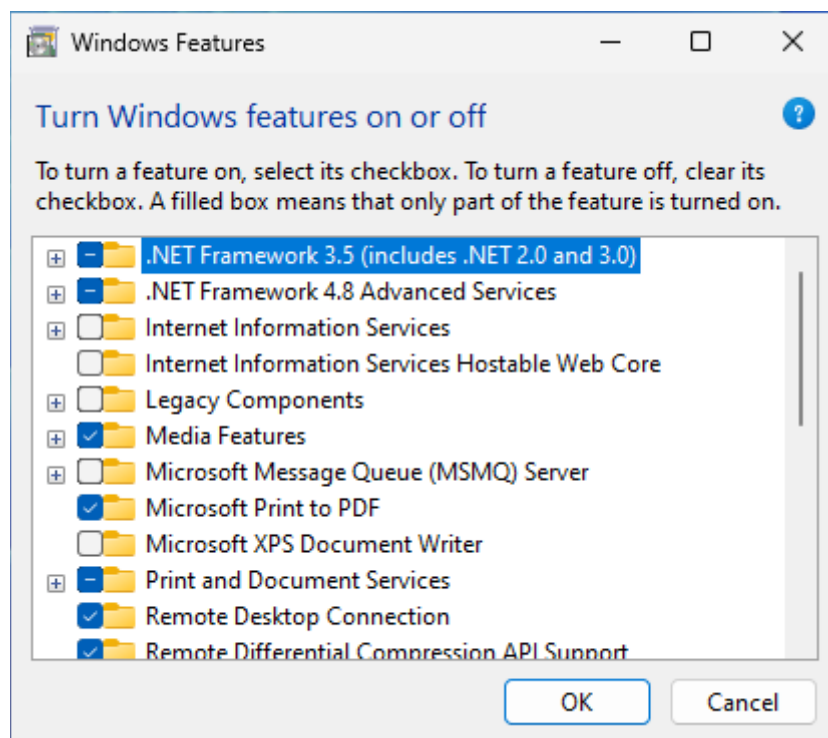
[Windows 11]

ATTENTION:

Black-and-white documents will be available for printing in both the Main Hall as well as in building 4, floor 5. Colour documents however, will only be available for printing in Main Hall.

Step 1 – SafeQ Client installation

1. Download **SafeQ Client** – [Link](#)
2. Unpack the downloaded file to any location, e.g. Desktop.
3. Open the **SafeQ.ini** file, find **AuthText** field and input your login there. It has to follow format: first letter of the name and whole surname.
E.g.:
for Jan Nowak: AuthText=jnowak
for Anna Nowak-Kowalska: AuthText=anowak
Save the file and exit.
4. .NET FRAMEWORK 3.5 is required for the Client to function correctly. Here is how you can check whether it is already installed on your machine:
Control Panel → Programs → Programs and features → Turn Windows features on or off
or
Settings → System → Optional features → More Windows features.



5. If item **.NET Framework 3.5 (includes .NET 2.0 and 3.0)** is checked, product is already installed. Otherwise, you need to check it and install it, following the installation wizard.
6. Run the **Install.exe** file.

Konica Minolta – Bizhub 360i Printer Installation Guide [Windows 11]

Step 2 – Driver installation

1. Go to the [Konica Minolta](#) website, choose appropriate operating system and language.

Search your product: Or make choice step by step:
A3 Multifunctional Black/White
bizhub 360i

Drivers Click to close

English Windows 10 (64bit) Version

Universal Printer Driver V4

Version	Release Date	Emulation	Description	Download
2.4.0.0	May 24, 2024	PCL6	i	+
2.2.0.0	Jan 8, 2024	PCL6	i	+
2.0.0.4	May 6, 2022	PCL6	i	+

Universal Printer Driver

Version	Release Date	Emulation	Description	Download
3.9.737.0	May 24, 2024	PCL6	i	+
3.9.737.0	May 24, 2024	PostScript	i	+
3.9.737.0	May 24, 2024	PC-Fax	i	+
3.9.525.0	Jan 8, 2024	PC-Fax	i	+

2. Accept the license and download the file

PCL6 Universal Print driver (3.9.737.0 MU) for KONICA MINOLTA

Software End User License Agreement

PLEASE READ CAREFULLY THE LICENSE AGREEMENT BELOW BEFORE DOWNLOADING, INSTALLING OR USING THE SOFTWARE. DOWNLOADING, INSTALLING OR USING THE SOFTWARE SHALL BE DEEMED YOUR LAWFUL ACCEPTANCE OF THE TERMS AND CONDITIONS BELOW. IF YOU DO NOT AGREE TO THEM, DO NOT DOWNLOAD, INSTALL, NOR USE THE SOFTWARE.

1. SOFTWARE

"Software" means this computer program (software), independent from its distribution channel, i.e. whether downloaded on royalty-free basis (which may include digitally encoded, machine readable, scalable outline font data as encoded in a special format) or obtained on DVD or any other physical data carrier, together with all codes, techniques, software tools, format, design, concepts, methods and ideas associated with the computer program and all documentation related thereto.

Accept License agreement

Files:

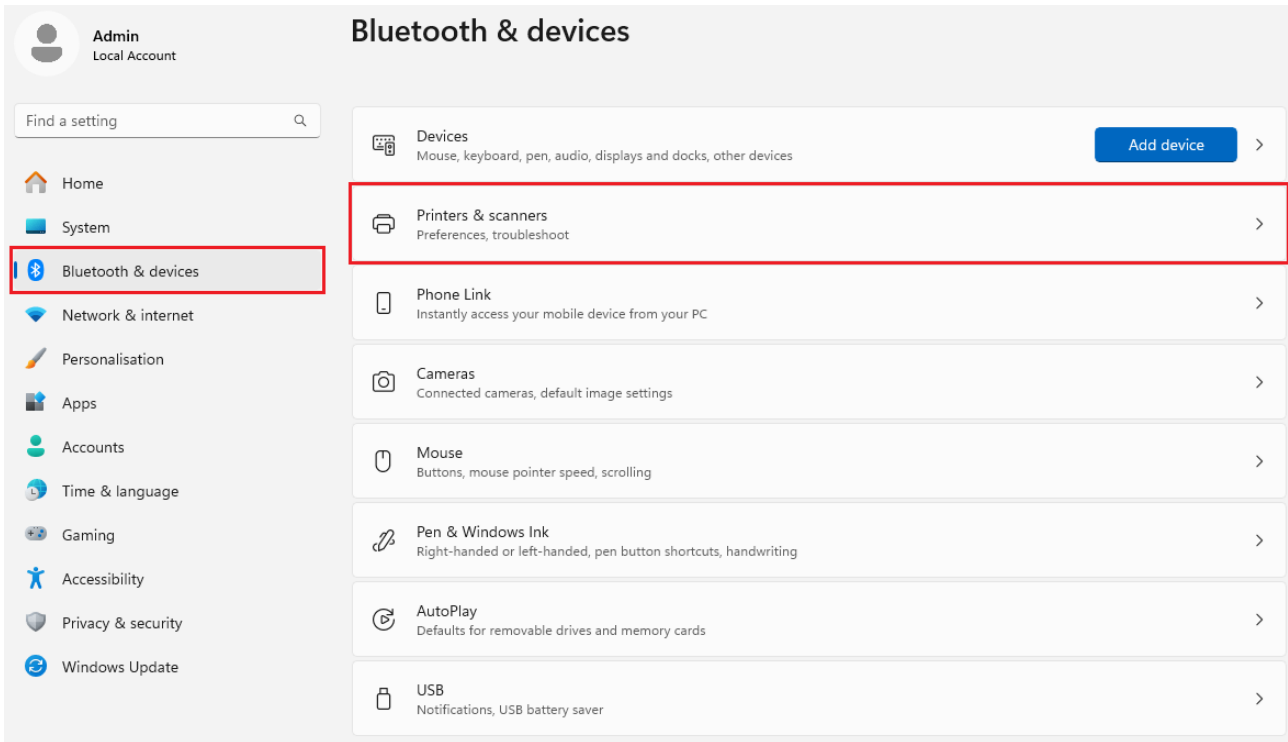
- [UPDPCL6Win_397370MU.txt \(79KB\)](#)
- [UPDPCL6Win_397370MU.zip \(97039KB\)](#)

3. Unpack the driver archive anywhere, e.g. Desktop.

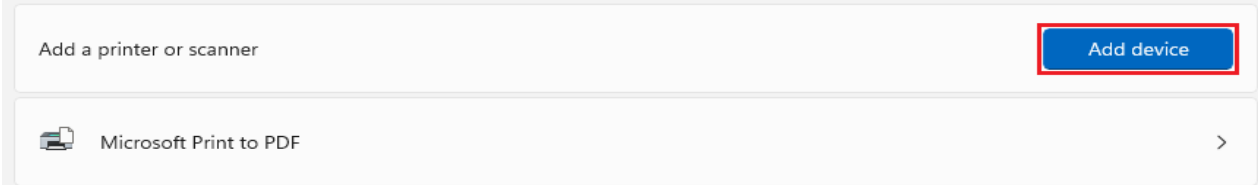
Konica Minolta – Bizhub 360i Printer Installation Guide

[Windows 11]

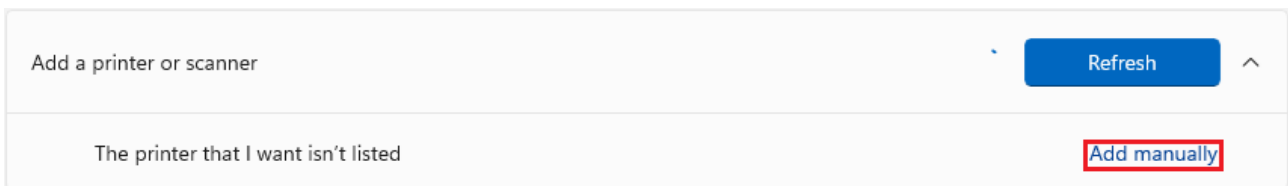
4. Go to **Settings** → **Bluetooth & devices** → **Printers & scanners** and click **Add device** button.



Bluetooth & devices > Printers & scanners



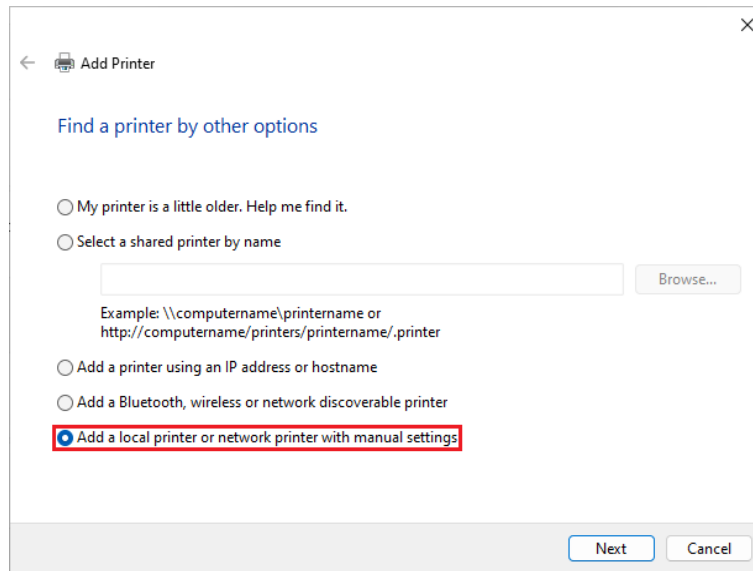
5. Wait until item *The printer that I want isn't listed* appears and click the **Add manually** link



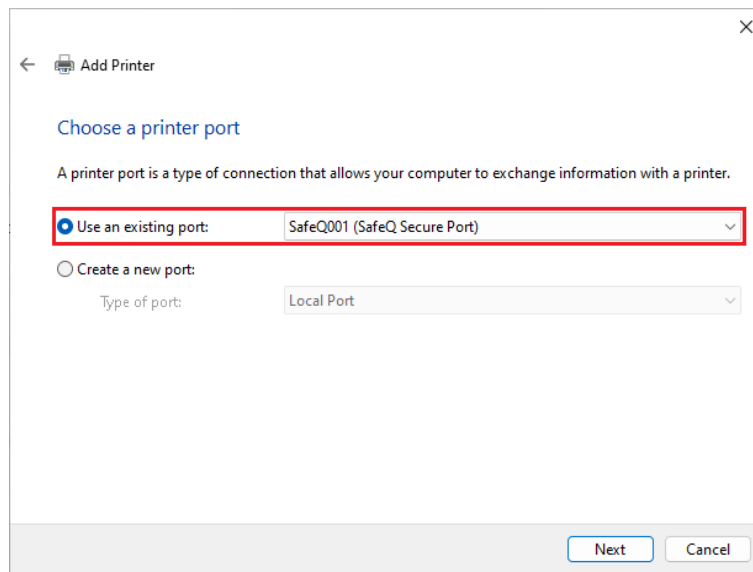
Konica Minolta – Bizhub 360i Printer Installation Guide [Windows 11]

6. In the installation wizard:

1. Select **Add a local printer or network printer with manual settings** and click *Next*.

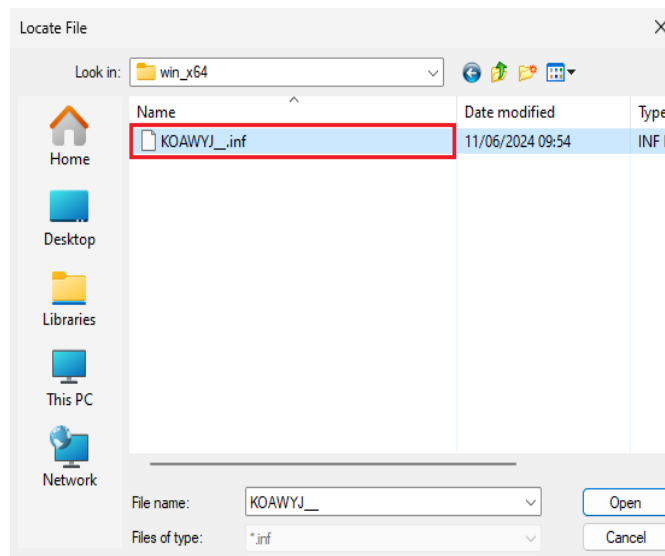
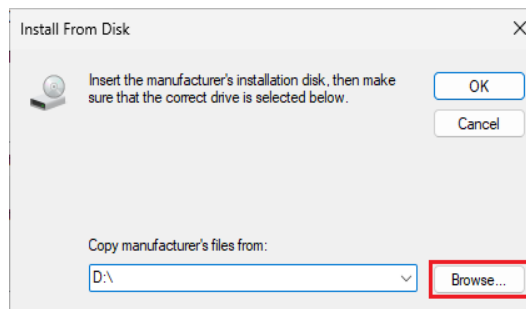
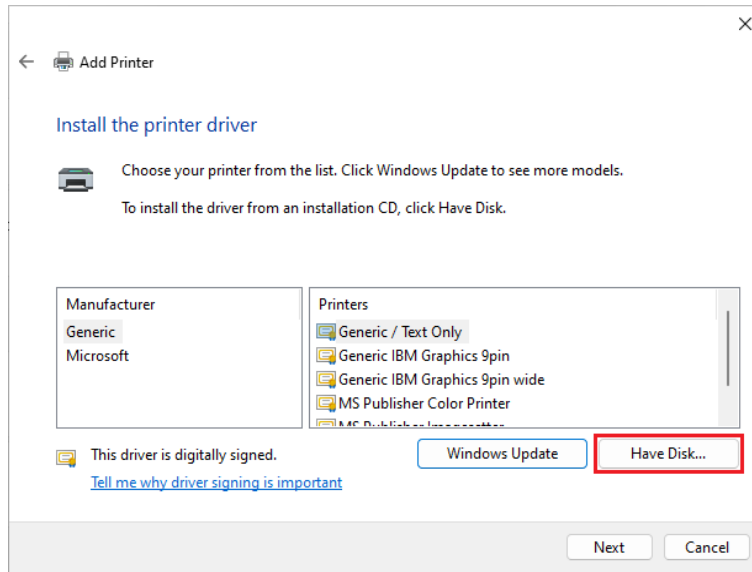


2. Check **Use an existing port**, select **SafeQ001 (SafeQ Secure Port)** port and click *Next*.



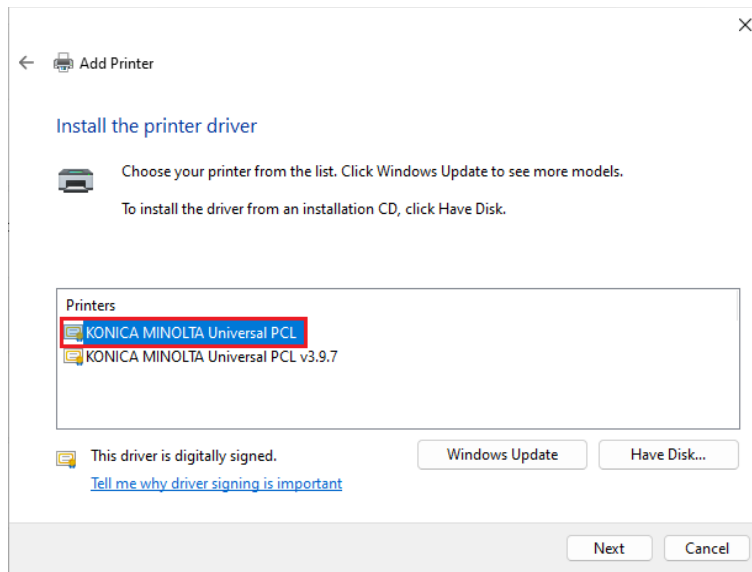
Konica Minolta – Bizhub 360i Printer Installation Guide [Windows 11]

3. Click **Have Disk...** button, move to the folder you unpacked the driver → /driver/win_x64 and select the file inside



Konica Minolta – Bizhub 360i Printer Installation Guide [Windows 11]

4. Select **KONICA MINOLTA Universal PCL** and click *Next*.



5. Input a name for the printer. In the next step, select **Do not share this printer** and click *Next*.
6. When the following message appears, the installation process is over.

