

# Install Konica Minolta Bizhub 360i on Windows

## Step 1 – SafeQ Clitent installation

1. Download SafeQ Client – [link](#)
2. Extract the file to the desired location, e.g. Desktop
3. **Edit the SafeQ.ini file** by typing your login in the line **AuthText**. To do that, put the first letter of your name and your full name.

Example:

For Jan Nowak please put: AuthText=jnowak

For Anna Nowak please put: AuthText=anowak

Save and close the file.

4. **In the case of Windows 10 please install .NET Framework 3.5 in the following way: Control Panel -> Programs and features -> Turn Windows features on or off -> tick the box at .NET Framework 3.5 -> Install by following the prompts.**
5. Run Install.exe

## Step 2 – Install driver

1. Download the printer driver from this page: [Konica Minolta](#), Select the operating system (specify whether it is 32 or 64-bit)and language.

Search your product:

GO >

Or make choice step by step:

A3 Multifunctional Black/White

bizhub 360i

Drivers

Click to close

English

Windows 10 (64bit)

Version

### Universal Printer Driver V4

Version	Release Date	Emulation	Description	Download
2.0.0.3	Nov 22, 2021	PCL6	<a href="#">i</a>	<a href="#">+</a>
1.4.0.4	Nov 5, 2020	PCL6	<a href="#">i</a>	<a href="#">+</a>

### Universal Printer Driver

Version	Release Date	Emulation	Description	Download
3.9.118.0	Feb 23, 2022	PCL6	<a href="#">i</a>	<a href="#">+</a>
3.9.117.0	Dec 13, 2021	PostScript	<a href="#">i</a>	<a href="#">+</a>
3.9.117.0	Nov 22, 2021	PC-Fax	<a href="#">i</a>	<a href="#">+</a>
3.7.0.0	Nov 5, 2020	PCL5c, PCL5e	<a href="#">i</a>	<a href="#">+</a>

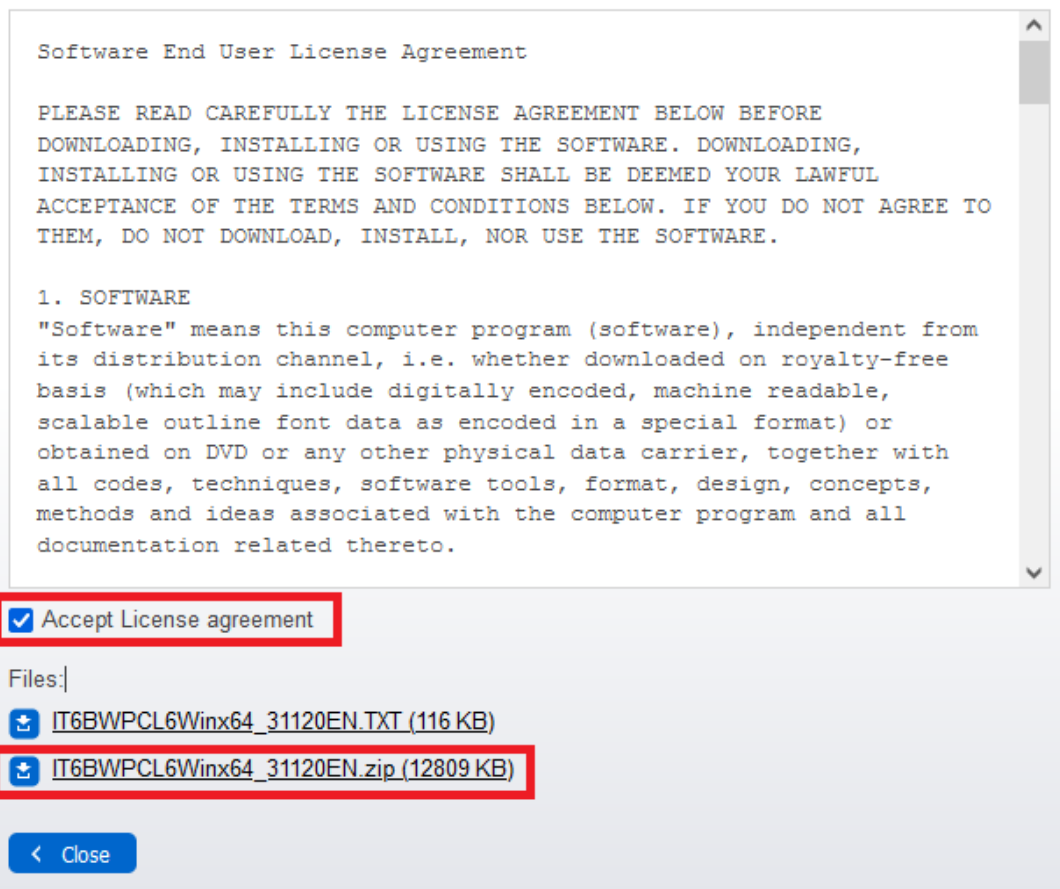
### Printer Driver

Version	Release Date	Emulation	Description	Download
3.1.12.0	Dec 13, 2021	PC-Fax	<a href="#">i</a>	<a href="#">+</a>
3.1.12.0	Sep 1, 2021	PostScript	<a href="#">i</a>	<a href="#">+</a>
3.1.12.0	Sep 1, 2021	PCL6	<a href="#">i</a>	<a href="#">+</a>

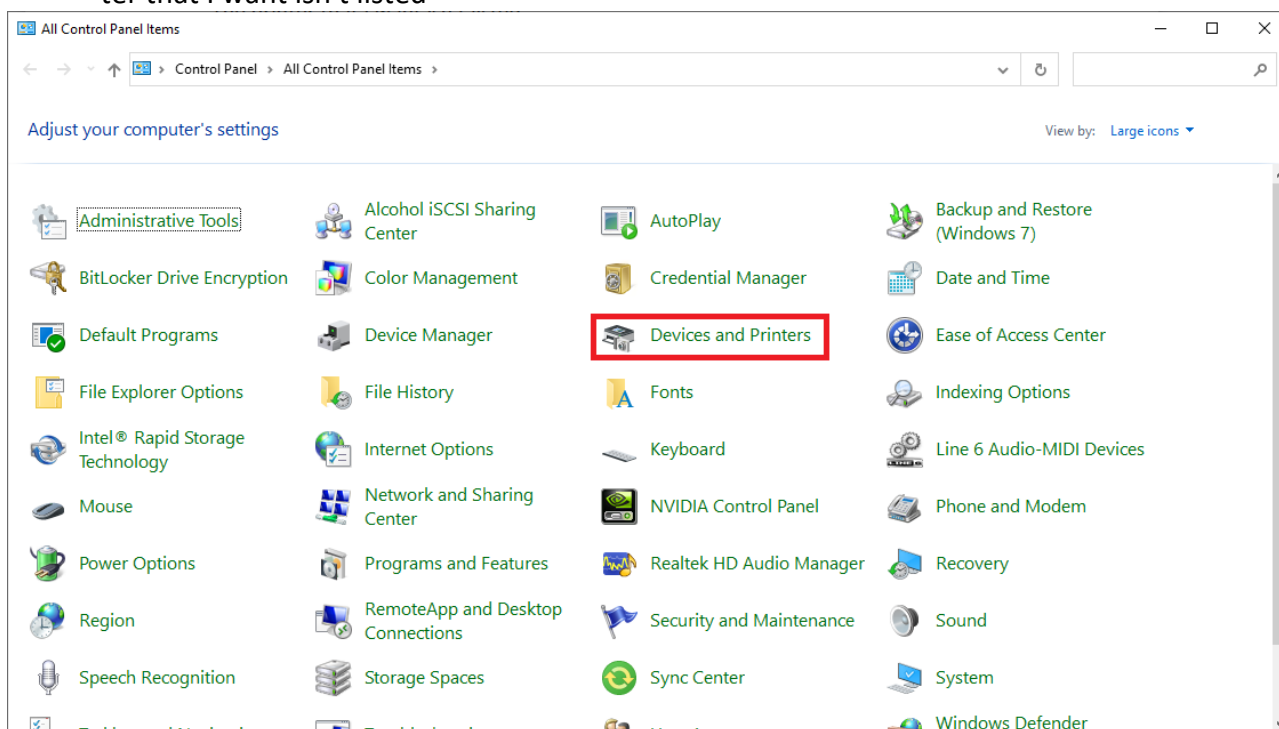
PPP

2. Accept the User Agreement and download the driver file

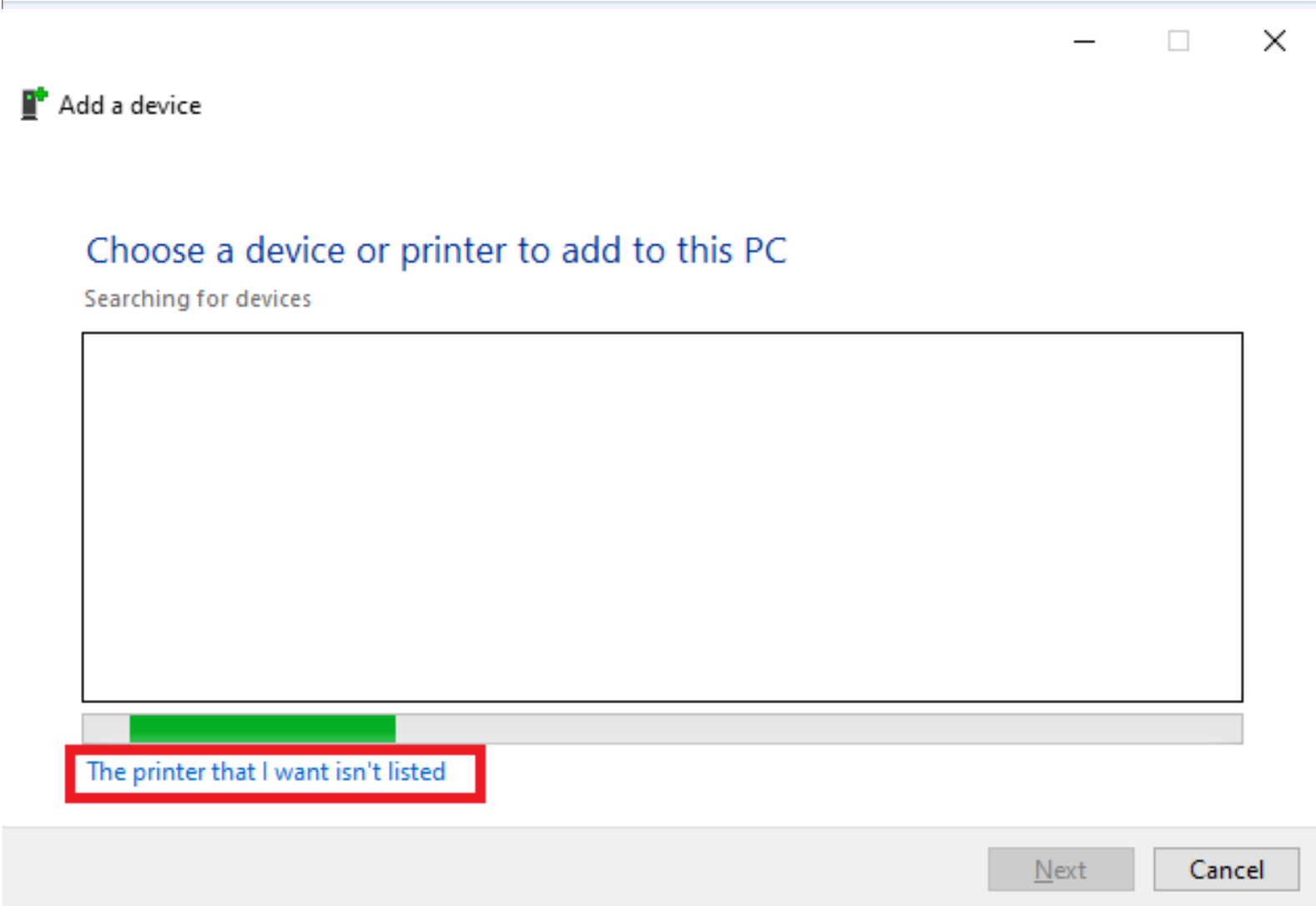
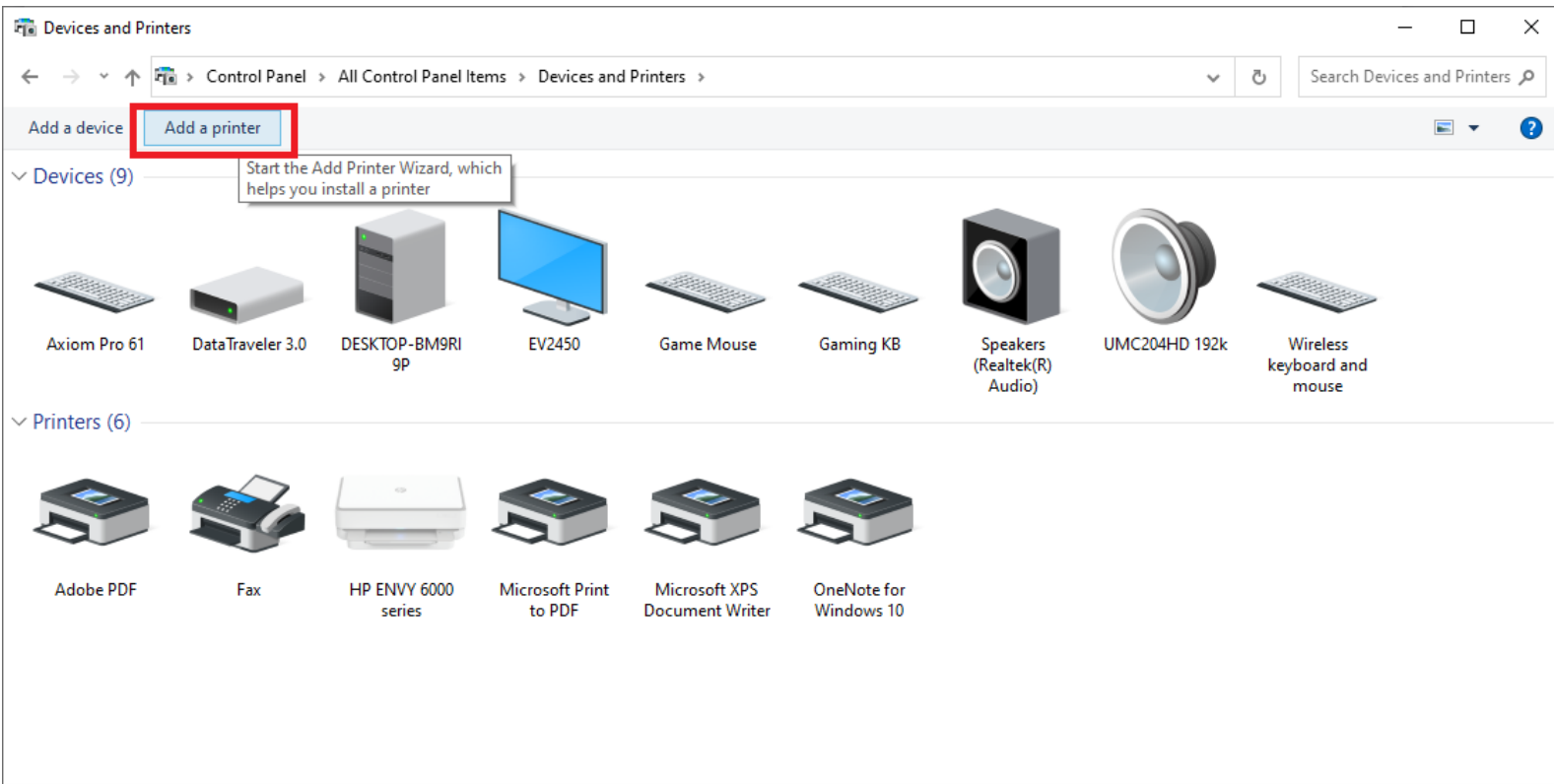
## PCL6 driver (3.1.12.0 EN) for KONICA MINOLTA bizhub BW Series



3. Extract the driver to the desired location, e.g. Desktop
4. Now let's begin the main stage of the printer installation. Windows Logo and type "Devices and Printers". When a new window appears, select "Add a printer" and choose "The printer that I want isn't listed"

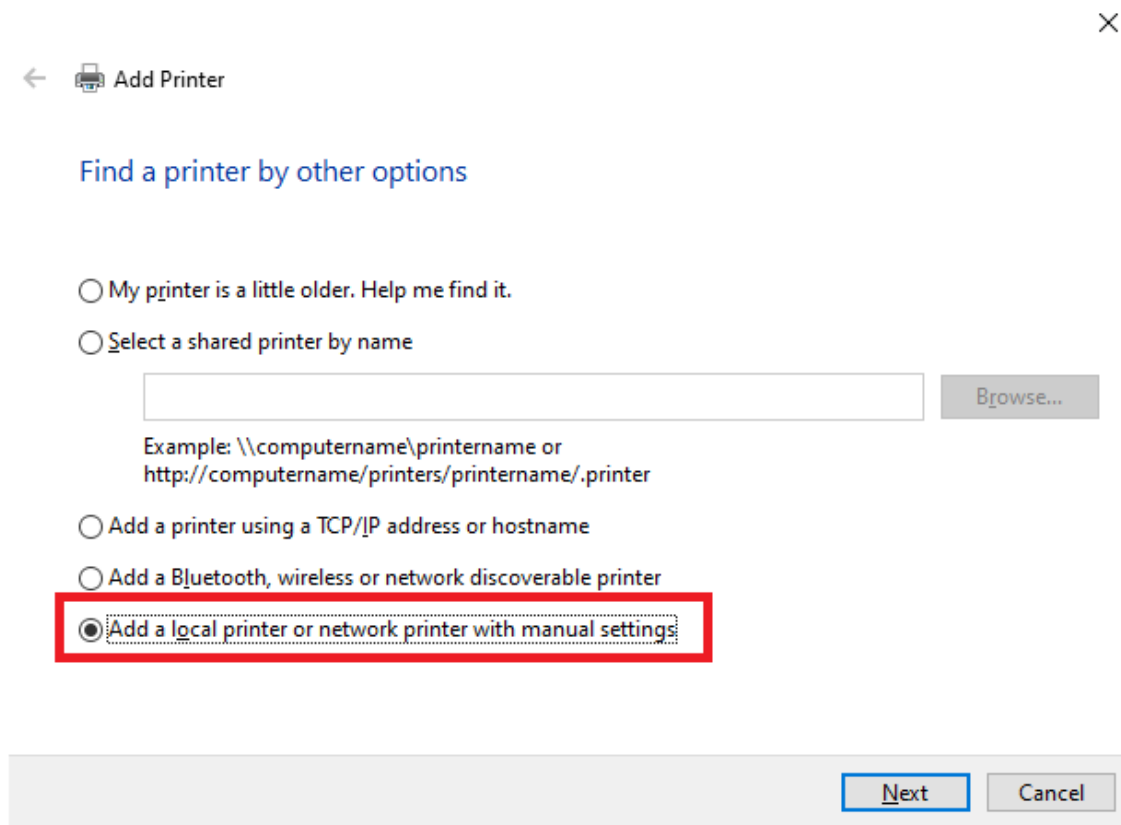


### 3 Install Konica Minolta Bizhub 360i on Windows



## Install Konica Minolta Bizhub 360i on Windows

5. In the next window please select: Add a local printer or network printer with manual settings. Click "Next".



← Add Printer

Find a printer by other options

My printer is a little older. Help me find it.

Select a shared printer by name

Browse...

Example: \\computename\printername or  
http://computename/printers/printername/.printer

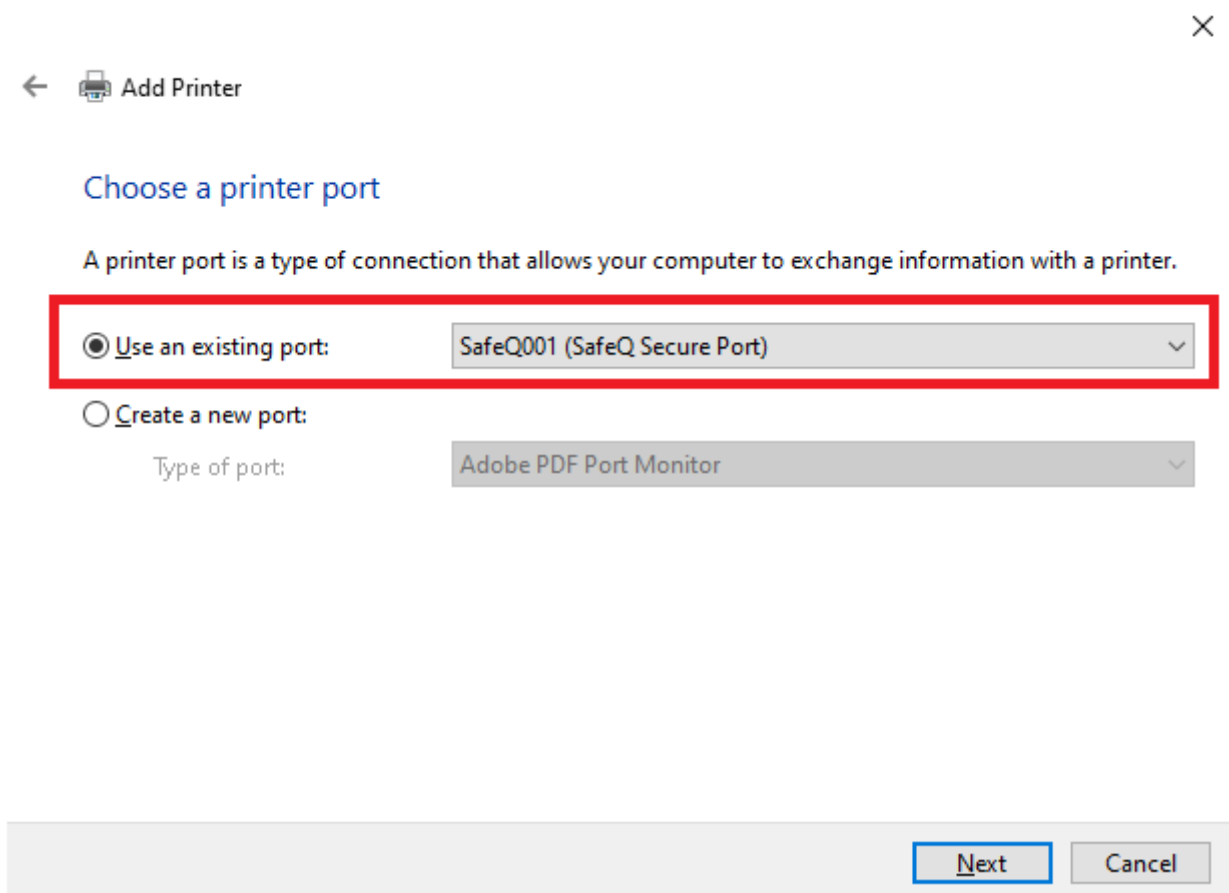
Add a printer using a TCP/IP address or hostname

Add a Bluetooth, wireless or network discoverable printer

Add a local printer or network printer with manual settings

Next Cancel

6. Choose "Use an existing port" and select SafeQ001 (SafeQ Secure Port), then click "Next".



← Add Printer

Choose a printer port

A printer port is a type of connection that allows your computer to exchange information with a printer.

Use an existing port: SafeQ001 (SafeQ Secure Port)

Create a new port:

Type of port: Adobe PDF Port Monitor

Next Cancel

## Install Konica Minolta Bizhub 360i on Windows

7. Choose "Have Disk" to continue the installation. Click "Browse" and locate the previously downloaded driver, then click Open. Choose the printer Konica Minolta 306i SeriesPCL from the list and click "Next"



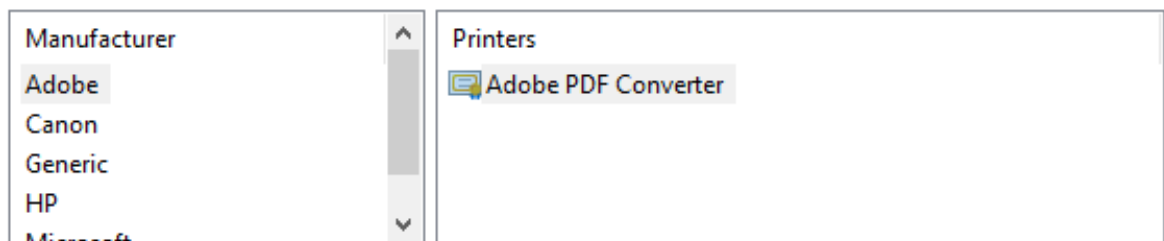
← Add Printer

### Install the printer driver



Choose your printer from the list. Click Windows Update to see more models.

To install the driver from an installation CD, click Have Disk.



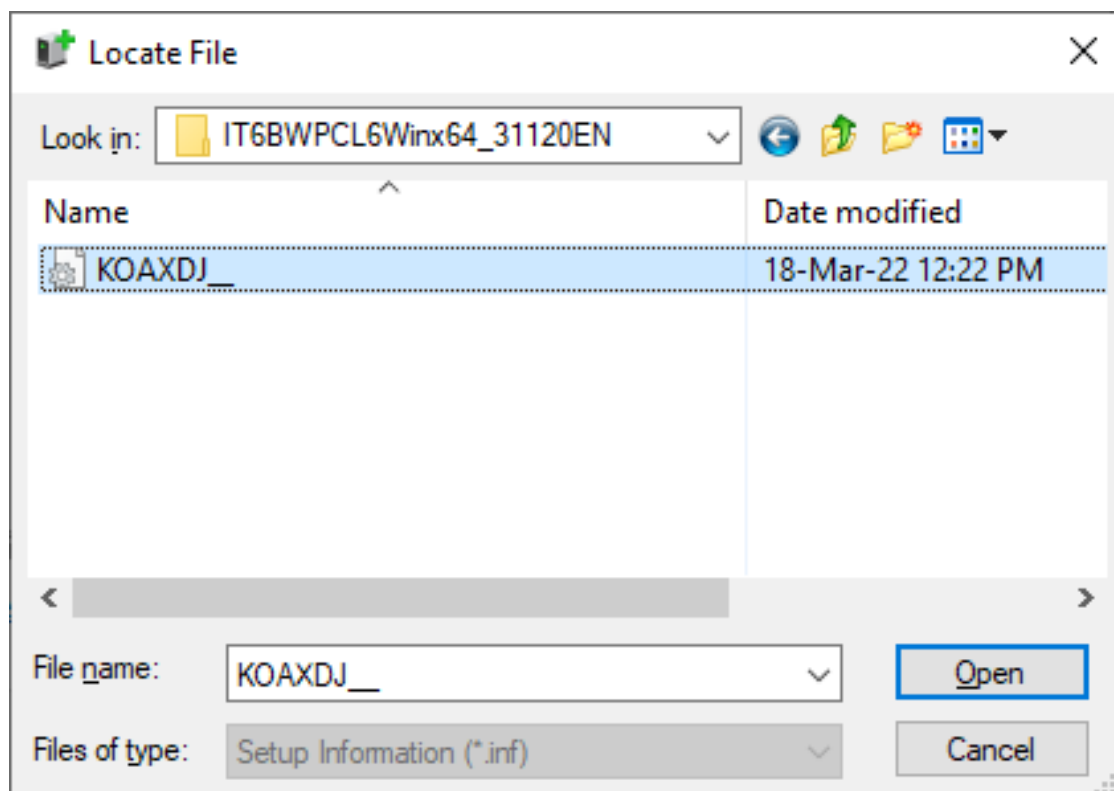
This driver is digitally signed.  
[Tell me why driver signing is important](#)

Windows Update

Have Disk...

Next

Cancel





←  Add Printer

## Install the printer driver




Choose your printer from the list. Click Windows Update to see more models.

To install the driver from an installation CD, click Have Disk.

Printers

- KONICA MINOLTA 306iSeriesPCL**
- KONICA MINOLTA 4700i PCL
- KONICA MINOLTA 4750iSeriesPCL
- KONICA MINOLTA 650iSeriesPCL
- KONICA MINOLTA 750i PCL

 This driver is digitally signed.

[Tell me why driver signing is important](#)


[Windows Update](#)

[Have Disk...](#)

**Next**

Cancel



←  Add Printer

## Printer Sharing

If you want to share this printer, you must provide a share name. You can use the suggested name or type a new one. The share name will be visible to other network users.

**Do not share this printer**

Share this printer so that others on your network can find and use it

Share name:

KONICA MINOLTA 306iSeriesPCL

Location:


Comment:

Next

Cancel

8. Click „Next” button and you have installed printer!



←  Add Printer

You've successfully added KONICA MINOLTA 306iSeriesPCL

To check if your printer is working properly, or to see troubleshooting information for the printer, print a test page.

[Print a test page](#)

Finish

Cancel