

Step 1 – SafeQ Clitent installation

1. Download SafeQ Client – [link](#)
2. Extract the file to the desired location, e.g. Desktop
3. **Edit the SafeQ.ini file** by typing your login in the line **AuthText**. To do that, put the first letter of your name and your full name.

Example:

For Jan Nowak please put: AuthText=jnowak

For Anna Nowak please put: AuthText=anowak

Save and close the file.







4. **In the case of Windows 10 please install .NET Framework 3.5 in the following way: Control Panel -> Programs and features -> Turn Windows features on or off -> tick the box at .NET Framework 3.5 -> Install by following the prompts.**
5. Run Install.exe

Step 2 – Install driver

1. Download the printer driver from this page: [Konica Minolta](#), Select the operating system (specify whether it is 32 or 64-bit)and language.

Search your product: Or make choice step by step:

Printer Driver

Version	Release Date	Emulation	Description	Download
3.1.12.0	Sep 3, 2021	PCL6		
3.1.12.0	Sep 3, 2021	PC-Fax		
3.1.12.0	Sep 3, 2021	PostScript		

2. Accept the User Agreement and download the driver file

PCL6 driver (3.1.12.0 EN) for KONICA MINOLTA bizhub Colour Series ✕

Software End User License Agreement

PLEASE READ CAREFULLY THE LICENSE AGREEMENT BELOW BEFORE DOWNLOADING, INSTALLING OR USING THE SOFTWARE. DOWNLOADING, INSTALLING OR USING THE SOFTWARE SHALL BE DEEMED YOUR LAWFUL ACCEPTANCE OF THE TERMS AND CONDITIONS BELOW. IF YOU DO NOT AGREE TO THEM, DO NOT DOWNLOAD, INSTALL, NOR USE THE SOFTWARE.

1. SOFTWARE
"Software" means this computer program (software), independent from its distribution channel, i.e. whether downloaded on royalty-free basis (which may include digitally encoded, machine readable, scalable outline font data as encoded in a special format) or obtained on DVD or any other physical data carrier, together with all codes, techniques, software tools, format, design, concepts, methods and ideas associated with the computer program and all documentation related thereto.

2. COPYRIGHT AND INTELLECTUAL PROPERTY RIGHTS

Accept License agreement

Files:

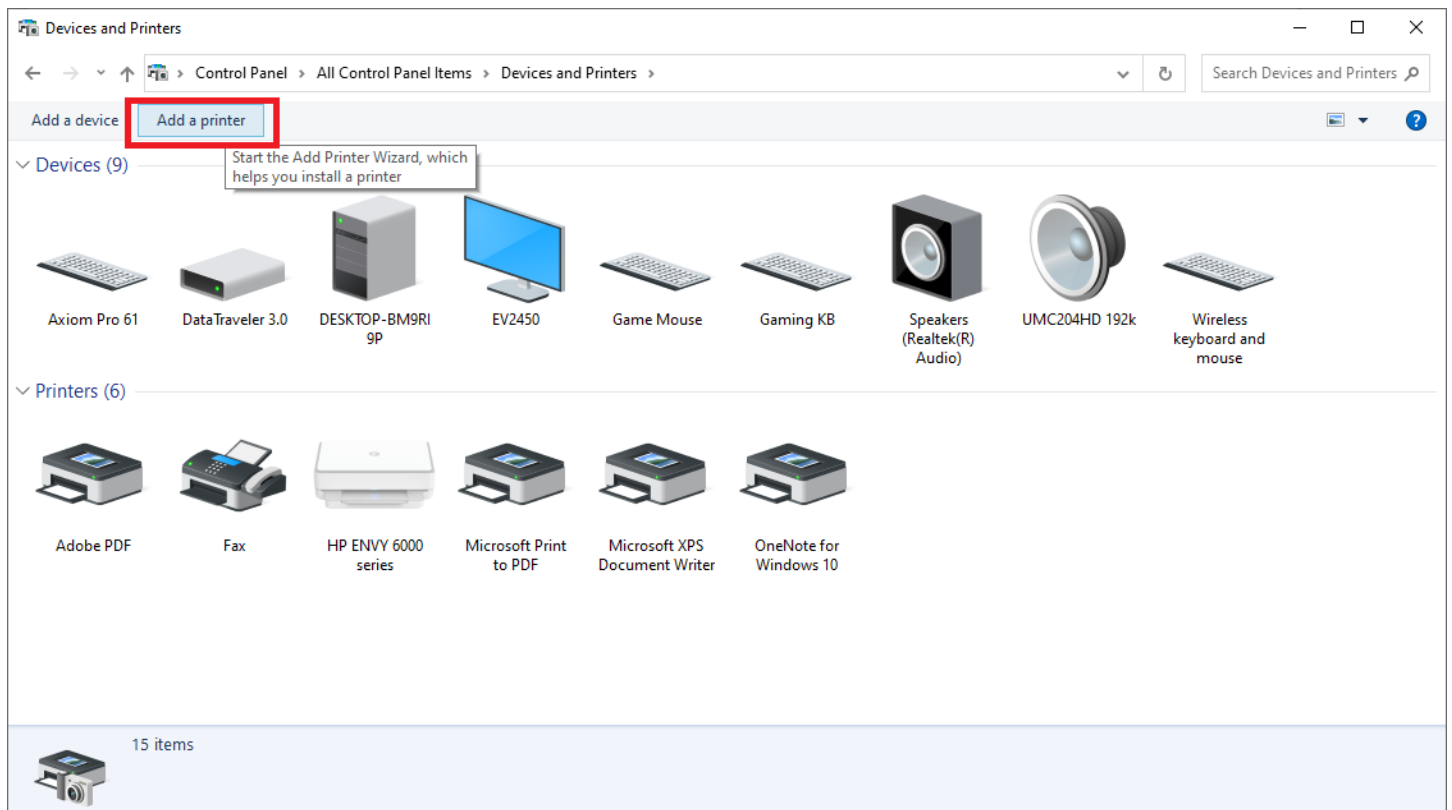
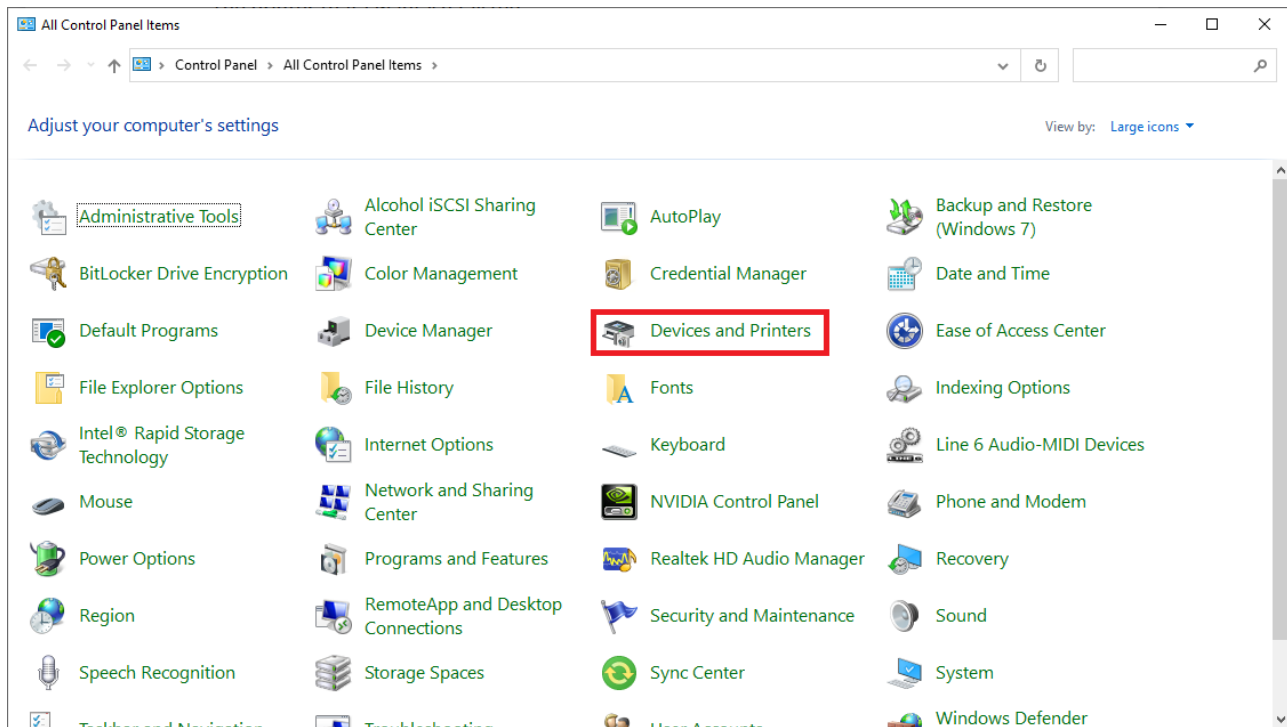
- IT6PCL6Winx64_31120EN.TXT (118 KB)
- IT6PCL6Winx64_31120EN.zip (15975 KB)

< Close

3. Extract the driver to the desired location, e.g. Desktop

Install Konica Minolta Bizhub C360i on Windows

- Now let's begin the main stage of the printer installation. Windows Logo and type "Devices and Printers". When a new window appears, select "Add a printer" and choose "The printer that I want isn't listed"



Install Konica Minolta Bizhub C360i on Windows

5. In the next window please select: Add a local printer or network printer with manual settings. Click "Next".

← Add Printer ×

Find a printer by other options

My printer is a little older. Help me find it.

Select a shared printer by name

Browse...

Example: \\computename\printername or
http://computename/printers/printername/.printer

Add a printer using a TCP/IP address or hostname

Add a Bluetooth, wireless or network discoverable printer

Add a local printer or network printer with manual settings

□ ×

Add a device Next Cancel

Choose a device or printer to add to this PC

Searching for devices

Add a device □ ×

Choose a device or printer to add to this PC

Searching for devices

Next Cancel

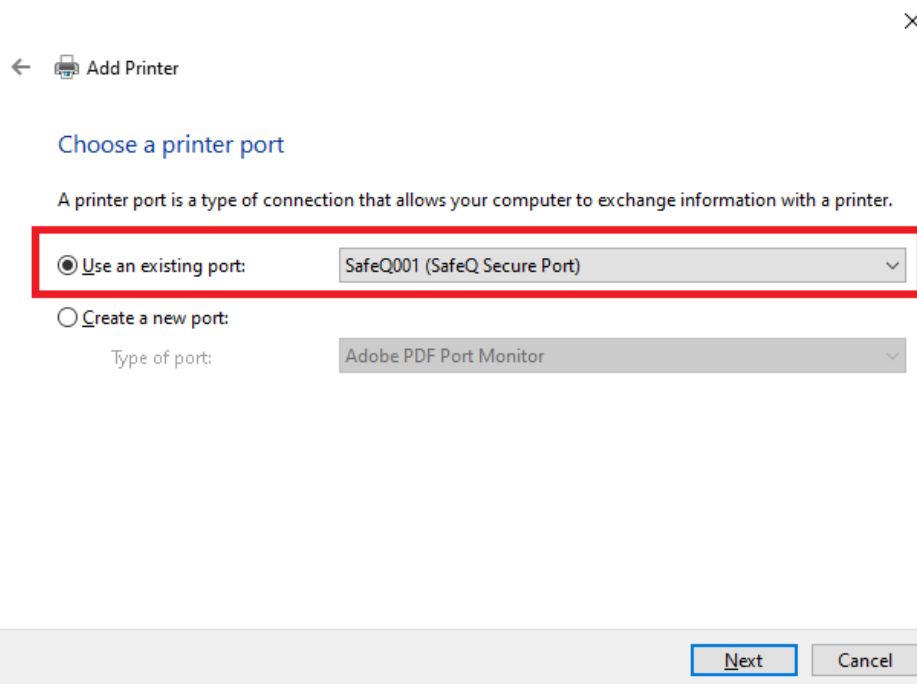
The printer that I want isn't listed

Next

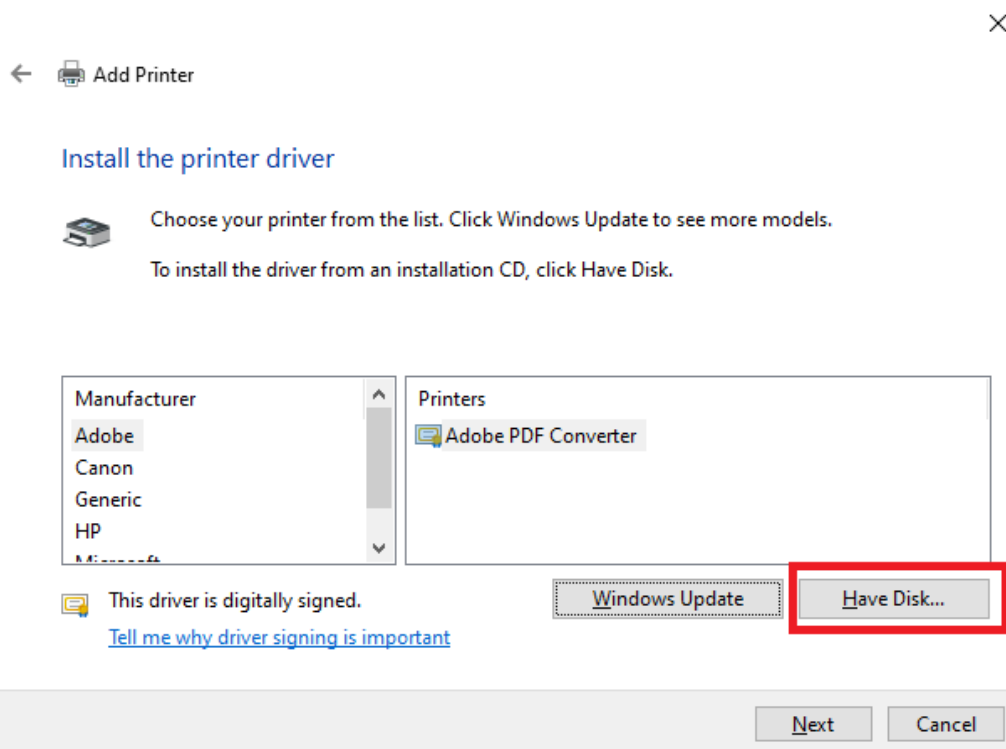
Cancel

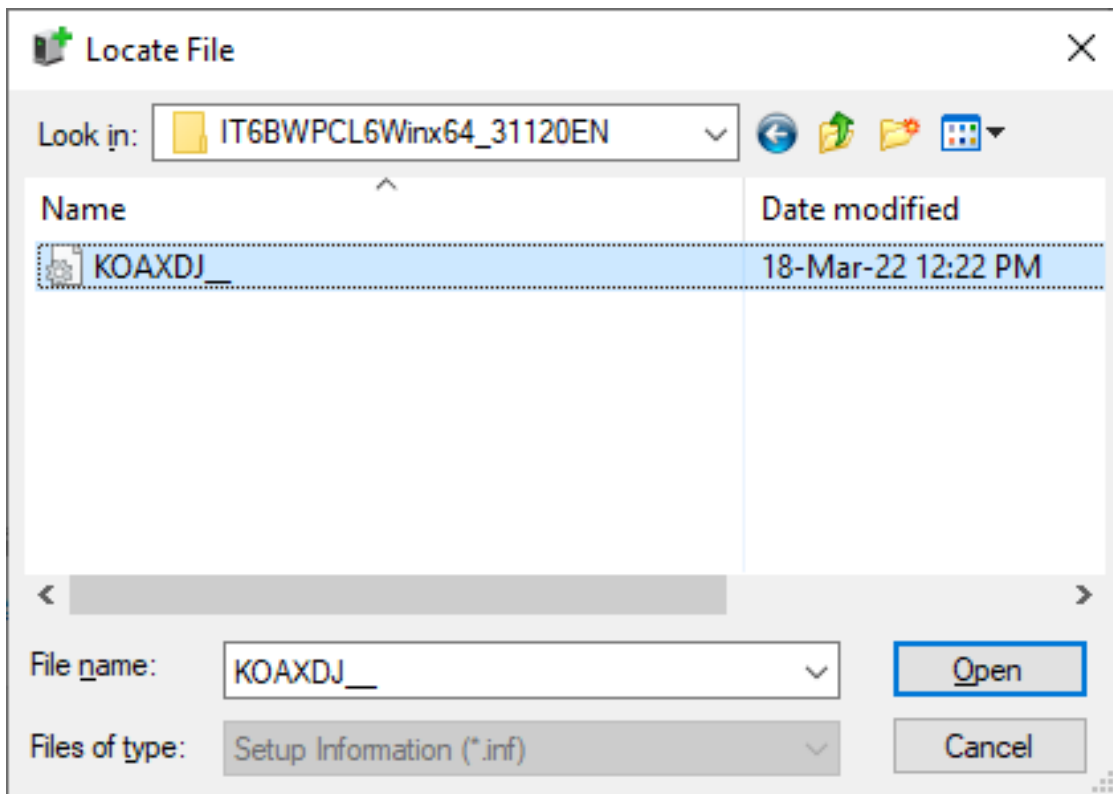
Install Konica Minolta Bizhub C360i on Windows

6. Choose “Use an existing port” and select SafeQ001 (SafeQ Secure Port), then click “Next”.



7. Choose “Have Disk” to continue the installation. Click “Browse” and locate the previously downloaded driver, then click Open. Choose the printer Konica Minolta C360i SeriesPCL from the list and click “Next”





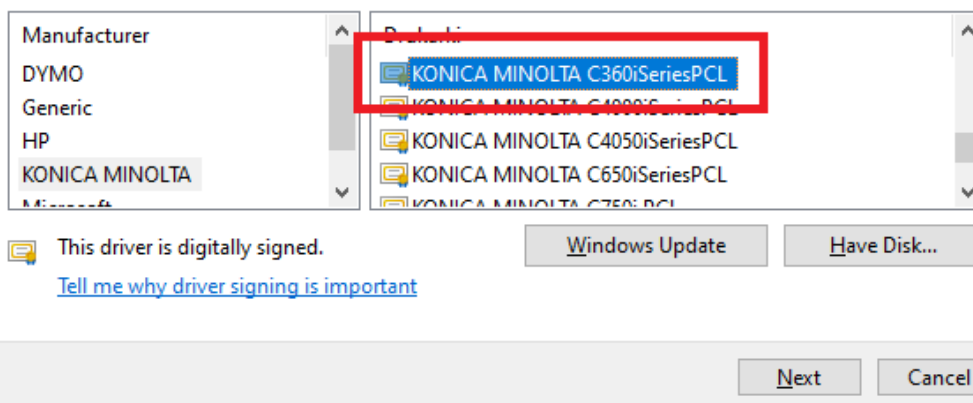
← Dodawanie drukarki

Zainstaluj sterownik drukarki



Wybierz drukarkę z listy. Kliknij przycisk Windows Update, aby wyświetlić więcej modeli.

Aby zainstalować sterownik z instalacyjnego dysku CD, kliknij przycisk Z dysku.



8. Click „Next” button and you have installed printer!